

THE LINE SHOWN ABOVE IS
BASED ON THE FOLLOWING
THESE DIMENSIONS ARE
FOR INFORMATION ONLY

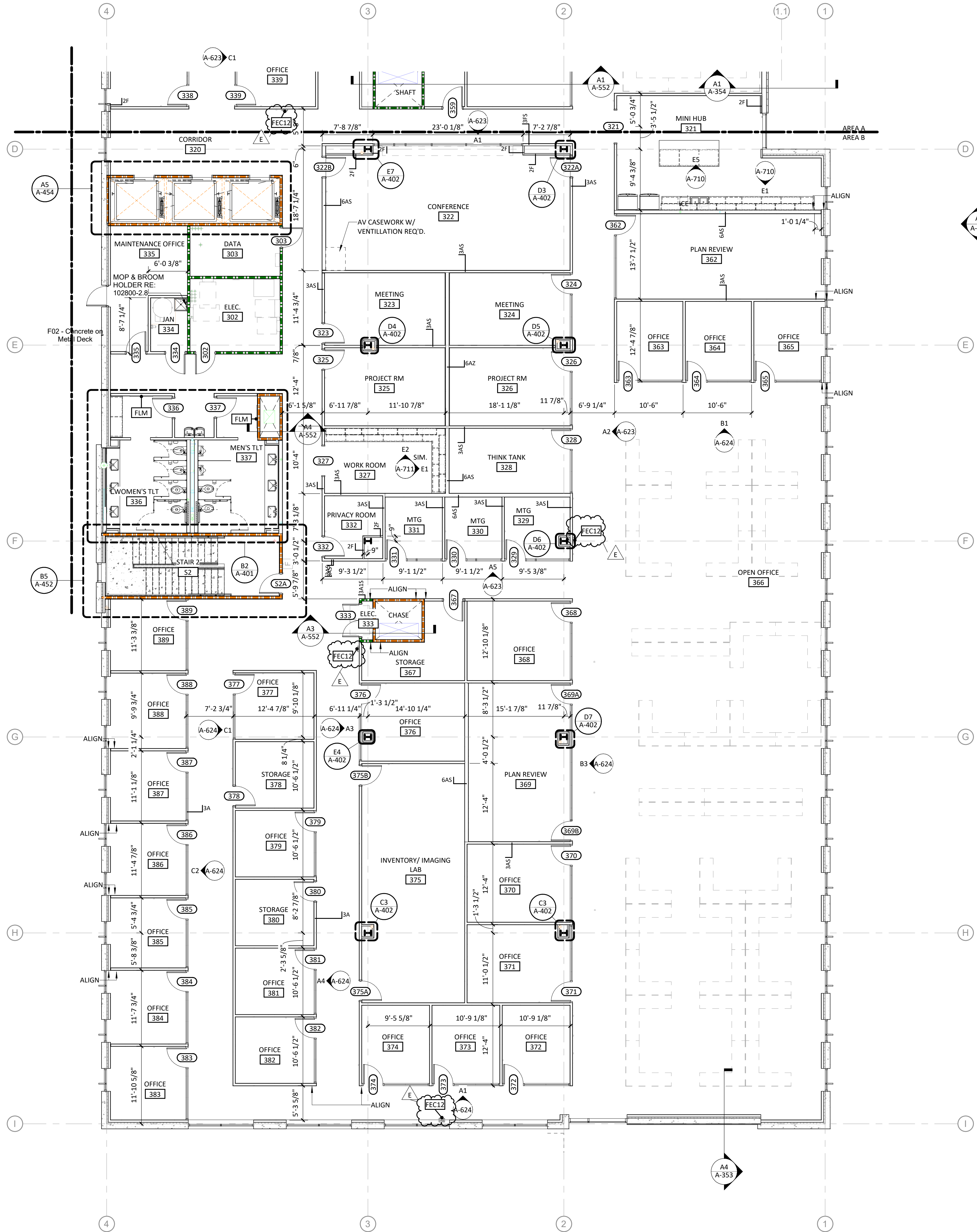
E

D

C

B

A



GENERAL SHEET NOTES

- DIMENSIONS TO FACE OF PARTITIONS ARE TO FACE OF STUD. FINISHES DEPICTED IN FINISH PLANS AND ELEVATIONS ARE NOT SHOWN ON PARTIAL FLOOR PLANS. REFER TO ENLARGED PLANS, ELEVATIONS, AND DETAILS.
- LOCATE DOOR OPENINGS 4" FROM NEAREST PERPENDICULAR WALL.
- FIRE AND SOUND RATED WALLS/PARTITIONS TO BE CONSTRUCTED TIGHT TO STRUCTURE, PIPING, DUCTWORK AND OTHER PENETRATIONS. ALL GAPS FULLY SEALED. ALL WORK IS TO BE BRACED TO STRUCTURE ABOVE.
- WHERE PARTITIONS OF DIFFERENT FIRE RATINGS INTERSECT, THE HIGHEST RATED PARTITION SHALL CONTINUE THROUGH. MAINTAIN PARTITION FIRE RATING BEHIND RECESSED FIRE EXTINGUISHER CABINETS.
- INSTALL BLOCKING IN PARTITIONS FOR CASEWORK, WALL MOUNTED EQUIPMENT, TRIM AND RELATED CONSTRUCTION.
- AT ANY LOCATION WHERE AN INTERIOR WALL TERMINATES AT AN EXTERIOR STOREFRONT, INSTALL MULLION MATE AT INTERSECTION OF WALL AND STOREFRONT.
- SEE LIFE SAFETY PLANS FOR REQUIRED FIRE SEPARATION WALLS.
- SEE SHEET A-801 FOR CONSTRUCTION SUBSYSTEMS AND PARTITION SCHEDULE.
- SEE SHEET A-710 THROUGH A-713 FOR INTERIOR ELEVATIONS.
- SEE SHEETS A-801 THROUGH A-804 FOR FINISH FLOORING, TRANSITIONS, PATTERNS AND WALL PROTECTION.
- SEE SHEETS A-401 & A-402 FOR ENLARGED PLANS INDICATING ADDITIONAL DIMENSIONS AND PARTITION TYPES, ACCESSORIES AND MOUNTING HEIGHTS.
- SEE STRUCTURAL DRAWINGS FOR SLAB DEPRESSIONS AND CUTOUTS.
- WHERE STRUCTURAL STEEL MEMBERS ARE EXPOSED AND NOT CONCEALED W/OTHER CONSTRUCTION, PAINT FINISH TO MATCH STOREFRONT/ CURTAIN WALL FRAME SYSTEMS, TYP.
- GYPSUM WALL BOARD ON EXTERIOR WALLS IS PART OF CORE & SHELL PHASE.
- INSTALL PT WOOD BLOCKING IN WALLS AT ALL SCREEN LOCATIONS. SEE AV DRAWINGS.

PARTITION TYPE NOTES

- ALL NON-DESIGNATED PARTITIONS SHALL BE TYPE 3A.
- TILE BACKER BOARD SHALL BE USED IN ALL LOCATIONS TO RECEIVE TILE FINISHES. REFER TO FINISH SCHEDULE AND INTERIOR ELEVATIONS FOR LOCATIONS.
- CONTRACTOR SHALL COORDINATE WITH MECHANICAL DUCTWORK PRIOR TO FABRICATION OF PARTITION WALLS.
- SHOULD CONDITIONS OCCUR WHERE A WALL IS UNABLE TO GO STRAIGHT UP TO STRUCTURE DUE TO PIPING, DUCTWORK, ETC., THE PARTITION (GYPSUM BOARD AND FRAMING) MAY JOG HORIZONTALLY ABOVE THE CEILING TO AVOID THE PROBLEM. RATED WALL INTEGRITY SHALL BE MAINTAINED.
- WHERE STUDS EXTEND TO STRUCTURE AND GYPSUM WALLBOARD AND SOUND ATTENUATION BLANKETS EXTEND JUST ABOVE THE FINISH CEILING, CAP OFF PARTITION FINISHES WITH A RUNNER CHANNEL WHEN CEILING PLENUM IS USED AS A RETURN AIR PLENUM.
- DIMENSIONAL CONFLICTS BETWEEN PARTITION TYPES AND THE ARCHITECTURAL FLOOR PLANS SHALL BE BROUGHT TO THE ATTENTION OF THE ARCHITECT.
- SEE LIFE SAFETY PLANS FOR THE LOCATIONS OF SMOKE BARRIERS, SMOKE PARTITIONS AND FIRE-RATED PARTITIONS.
- REFER TO UNDERWRITERS LABORATORIES, INC. FIRE RESISTANCE VOLUMES - CURRENT EDITION FOR SPECIFIC CONSTRUCTION REQUIREMENTS OF U.L. LISTED ASSEMBLIES.
- REFER TO MECHANICAL, ELECTRICAL AND PLUMBING DRAWINGS FOR TYPICAL U.L. LISTED PENETRATIONS THROUGH FIRE-RATED ASSEMBLIES. CONTRACTOR SHALL BE RESPONSIBLE FOR PROVIDING APPROPRIATE PROJECT-SPECIFIC U.L. LISTED ASSEMBLIES FOR PENETRATIONS.
- REFER TO DETAIL MECH. DWGS. FOR TYPICAL WALL FRAMING FOR FIRE DAMPERS IN RATED WALLS. COORDINATE EXACT FRAMING REQUIREMENTS WITH FIRE DAMPER MANUFACTURER. (COORDINATE ALL PARTITION CONSTRUCTION WITH MECHANICAL PRIME CONTRACTOR PRIOR TO COMMENCING PARTITION CONSTRUCTION).



CAPE FEAR FD STONEWATER



101 NORTH THIRD STREET, SUITE 500
WILMINGTON, NORTH CAROLINA 28401
TEL. 910.790.9901 FAX. 910.790.3111
WWW.LS3P.COM



NOT FOR
CONSTRUCTION

NHC Government Center 7702-190810

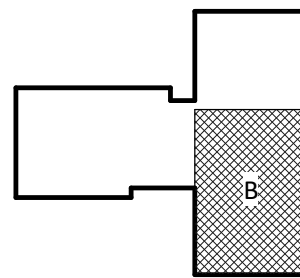
NEW HANOVER COUNTY
GOVERNMENT CENTER

GOVERNMENT CENTER DRIVE
WILMINGTON, NC 28403

LS3P PROJECT: 7702-190810

A	DATE	DESCRIPTION
A	2020.08.18	T1- SCHEMATIC DESIGN
B	2020.10.16	T1- DESIGN DEVELOPMENT
C	2020.11.20	T1 GMP SET
D	2020.12.16	GMP SET
E	2020.12.22	ADDENDUM #1

KEY PLAN:



SHEET NAME:
FLOOR PLAN- LEVEL
3- AREA B

ORIG SUBMISSION: 2020.12.16

CURRENT: 2020.12.22

ADDENDUM #1

SHEET:

A-103B

GMP SET

12/22/2020 11:41 PM

A1
A-103B

FLOOR PLAN- PARTIAL- LEVEL 3 - AREA B

1/8" = 1'-0"

1

2

3

4

5

6